

Electronic Appendix: Phenology parameters derived from MODIS EVI time series (2000-2012)

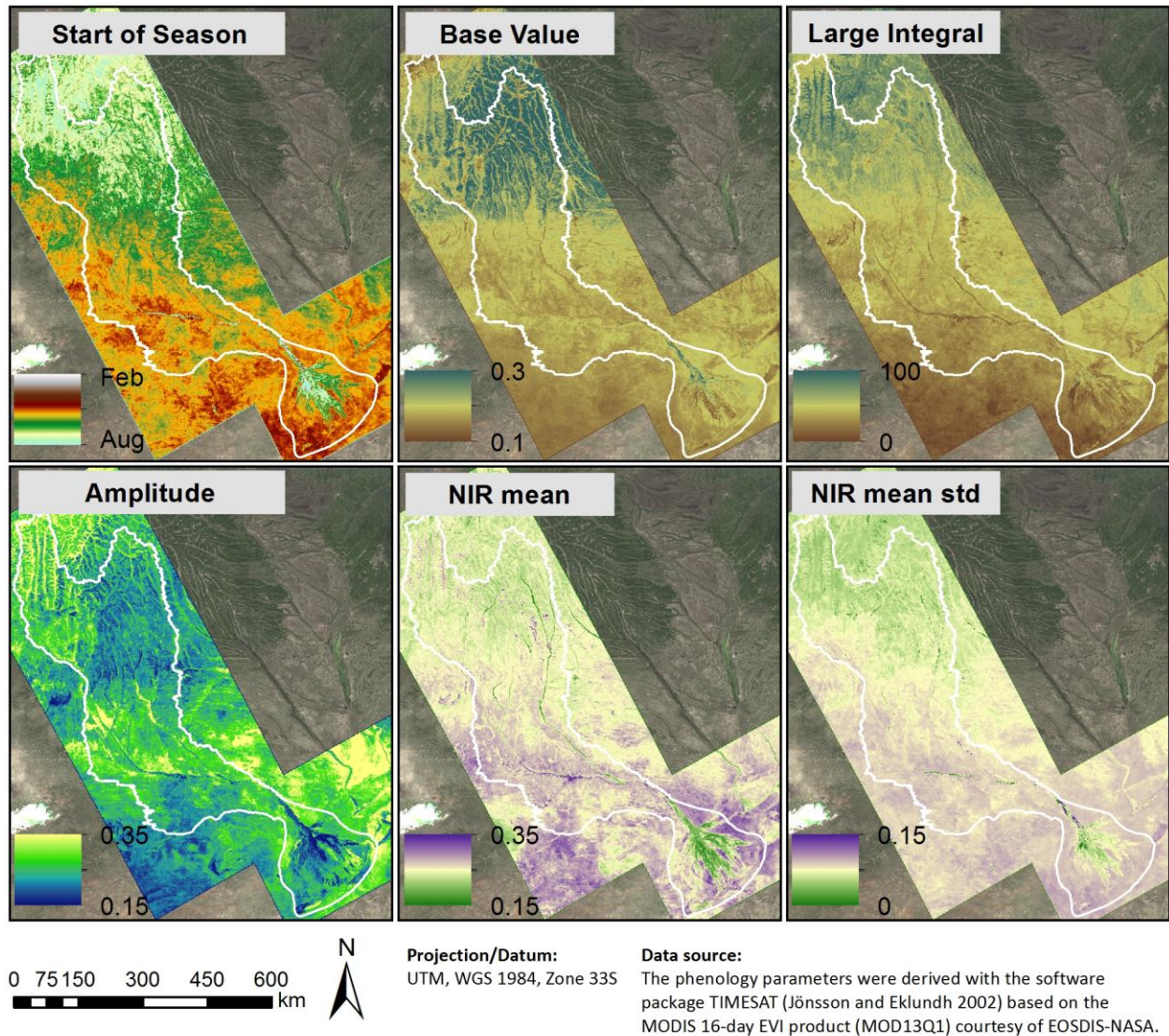


Figure 1: Mean phenology metrics derived from 16-day MODIS EVI time series covering the observation period 2000 to 2012, which were used as input layers for the classification of dominant functional vegetation cover.

The start of season refers to the time when the vegetation period begins; the base value reflects the minimum vegetation cover; the large integral is related to the overall biomass present within the

vegetation period; and the amplitude is linked to strength of the seasonality, i.e. the difference between minimum and maximum EVI. NIR mean and NIR mean std. (standard deviation of the mean)

reflectance in the Near Infrared wavelength region are two of the metrics most useful to map areas affected by inundation.